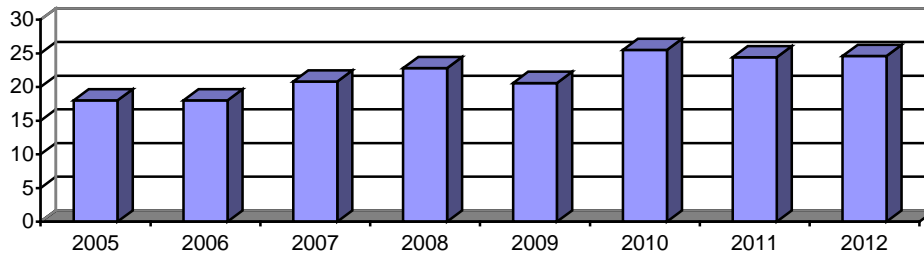


SECTION 2: UNIVERSITY DATA: NEW UNDERGRADUATE STUDENT INFORMATION

Table 2.3: Enrolled Freshmen Demographic Information Fall 2005 – 2012

Fall of	2005	2006	2007	2008	2009	2010	2011	2012
Enrolled	972	965	950	985	1,054	1,012	975	944
Men	42.1%	38.5%	39.2%	40.8%	39.8%	39.9%	39.9%	41.9%
Women	57.9%	61.5%	60.8%	59.2%	60.2%	60.1%	60.1%	58.1%
Mean ACT	25.9	26.0	26.6	26.3	26.5	26.5	27.1	26.6
High School Rank:								
Top 10%	40.3%	44.2%	42.7%	41.9%	41.3%	43.5%	43.8%	39.6%
Top 30%	79.1%	75.3%	80.3%	78.3%	78.5%	79.1%	81.3%	78.5%
Top 50%	94.9%	91.7%	96.1%	92.7%	92.2%	94.8%	95.8%	93.2%
Roman Catholic	60.7%	62.8%	67.3%	62.9%	60.9%	61.2%	59.8%	62.6%
Ethnicity:								
African American	3.6%	2.7%	2.9%	3.4%	3.2%	2.2%	2.3%	2.2%
Native American	1.4%	1.5%	1.8%	1.7%	1.4%	2.4%	0.7%	0.3%
Asian	9.1%	10.7%	11.3%	12.4%	11.1%	12.9%	9.7%	10.3%
Hispanic	3.9%	3.1%	4.8%	5.3%	4.9%	6.9%	7.0%	7.3%
Native Hawaiian						1.1%	0.0%	0.6%
Two or more							4.7%	3.8%
Ethnic Minority	18.0%	18.0%	20.8%	22.8%	20.6%	25.5%	24.4%	24.6%
International	0.3%	0.6%	1.1%	1.5%	1.5%	1.2%	1.4%	1.8%
Caucasian	81.4%	81.3%	78.0%	75.7%	77.9%	72.0%	72.9%	72.8%
Unknown						1.3%	1.3%	0.8%

Percentage Ethnic Minority Freshmen



Average ACT Composite Score

